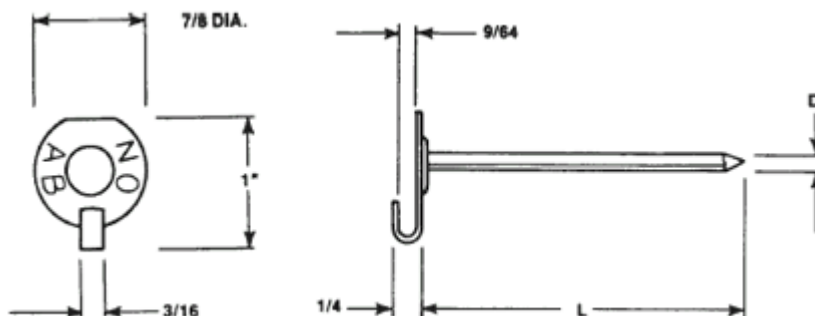


LACING ANCHOR

The Lacing anchor is a fabricated metal anchor consisting of a pin and tabbed, or hooked, washer. Stainless Steel is a popular material while some Lacing Anchors are made in Mild Steel. Stamped "no ab" to denote 'no asbestos', the tabbed head is 7/8" in diameter. The nail can be 12 gauge or 14 gauge in pin diameter. Typical application is for the fabrication of lacing blankets or removable covers with the anchor assisting in fabricating the blanket plus providing a "seam edge" for lacing two sides of the finished insulation blanket together.



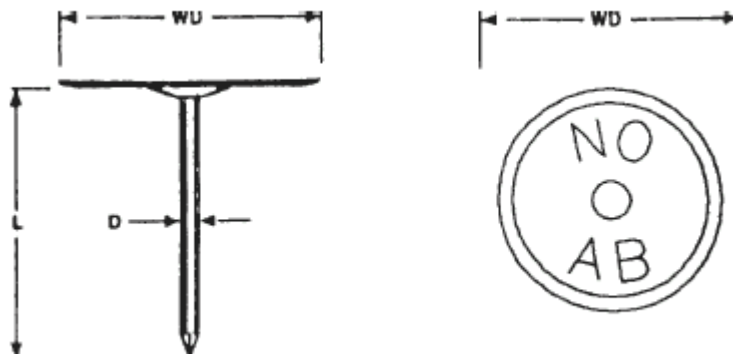
SIZE :	D 12 GA & 14 GA are standard. Other sizes are available by special order.
LENGTH :	L 2-1/2" & 4-1/2" are standard. Other lengths available by special order.
MATERIAL : LOW CARBON STEEL	STAINLESS STEEL
FEATURE : Zinc plating is standard	Does not apply to stainless.
OTHER MATERIALS :	Available by special order only.
WASHERS :	Self - locking washers are available in a variety of size, shape, and materials.

TO ORDER OR SPECIFY, GIVE :

1. Product Code.....LA
2. Size.....D
3. Length.....L
4. Material.....(if other than standard)

QUILTING PIN

The Quilting Pin Lacing Anchor is an accessory item used in Lacing Blankets or removable covers. Resembling the standard Cuphead weld pin, the quilting pin, by definition, is made in Stainless Steel and consists of a washer-head and assembled nail. Typically this lacing anchor is used to "quilt" a blanket or removable cover, providing support and stiffening to the various materials in the overall fabrication, or blanket. The washer head is usually 1-3/16" and various lengths are popular, usually coinciding with Lacing Anchor lengths in use for the blanket under fabrication. To finish the quilting pin onto the insulation blanket, a self locking washer is used, matching the pin diameter of the quilting pin anchor.



SIZE :	D 12 GA & 14 GA are standard. Other sizes are available by special order.
LENGTH :	L 2-1/2" & 4-1/2" are standard. Other lengths available by special order.
MATERIAL : LOW CARBON STEEL	STAINLESS STEEL
PLATING : Does not apply to Low CARBON	Does not apply to stainless.
OTHER MATERIALS :	Available by special order only.
WASHERS :	Self - locking washers are available in a variety of size, shape, and materials.

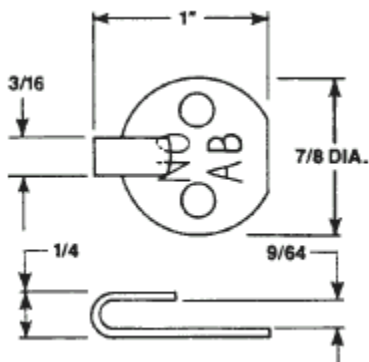
TO ORDER OR SPECIFY, GIVE :

1. Product Code.....QP
2. Size.....D
3. Length.....L
4. Material.....(if other than standard)

LACING ACCESSORIES

Lacing Hook washers, 2-hole washers and lacing rings are accessory items used in Lacing Blankets or removable covers. Usually made in Stainless Steel, these parts are used with lacing wire to assist in the fabrication and application design of many removable covers in various Insulation applications.

LA HOOK



LACING HOOK

SIZE :

One size as shown.

MATERIAL:

Stainless Steel

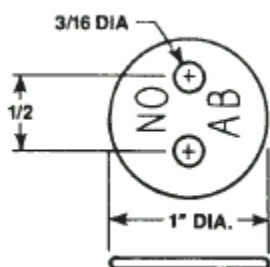
NO AB :

Furnished stamped NO AB to indicate non-asbestos material.

TO ORDER OR SPECIFY,GIVE:

1. Product Code.....LAH
2. Material

LA L 100



L 100 LACING WASHER

SIZE :

One size as shown.

MATERIAL:

Aluminum or Stainless Steel

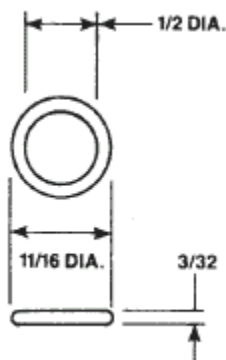
NO AB :

Available stamped NO AB to indicate non-asbestos material.

TO ORDER OR SPECIFY,GIVE:

1. Product Code.....L2H
2. Material

LA RING



LACING RING

SIZE :

One size as shown.

MATERIAL:

Zinc alloy - bright zinc plated

TO ORDER OR SPECIFY,GIVE:

1. Product Code.....LRZA